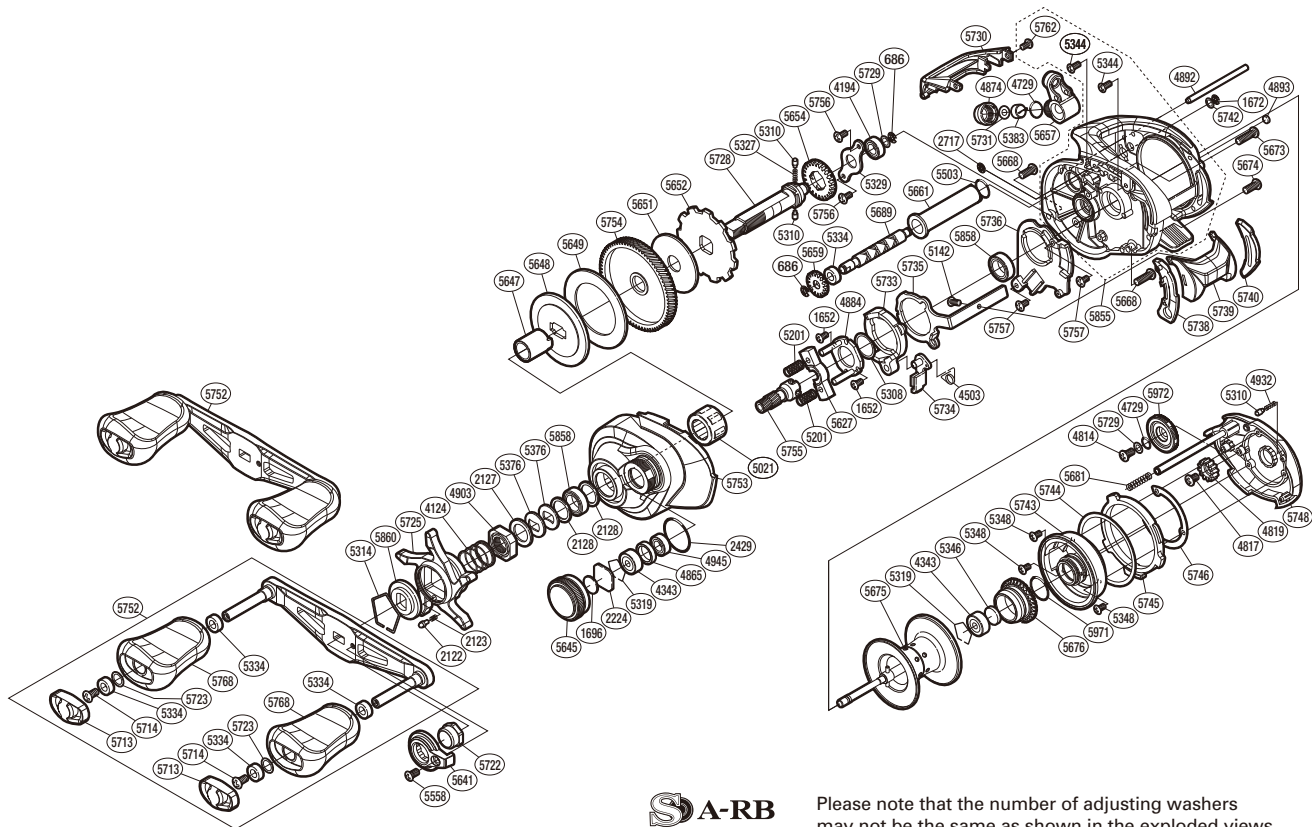


SHIMANO

CURADO

CU-201XGK



S A-RB
(51RH39L201X)

Please note that the number of adjusting washers may not be the same as shown in the exploded views. (Adjustment will vary with each individual product.)

| Part No. | Description | Part No. | Description | Part No. | Description |
|----------|-----------------------|----------|--------------------------|----------|----------------------------|
| BNT0686 | E Lock | BNT5319 | Bearing Retainer | BNT5725 | Star Drag |
| BNT1672 | Screw | BNT5327 | Idle Gear Spring | BNT5728 | Drive Shaft |
| BNT1672 | E Lock | BNT5329 | Drive Shaft Retainer | BNT5729 | Spacer |
| BNT1696 | Cast Control Spacer | BNT5334 | Bushing | BNT5730 | Level Wind Protector |
| BNT2122 | Click Pin | BNT5344 | Screw | BNT5731 | Spacer |
| BNT2123 | Click Spring | BNT5346 | Spacer B | BNT5733 | Clutch Cam |
| BNT2127 | Star Drag Spacer | BNT5348 | Screw | BNT5734 | Clutch Pawl Assembly |
| BNT2128 | Washer | BNT5376 | Washer | BNT5735 | Clutch Plate |
| BNT2224 | Spool Tension Spacer | BNT5383 | Line Guide Pawl | BNT5736 | Clutch Guard |
| BNT2427 | O Ring | BNT5503 | O Ring | BNT5738 | Clutch Bar Guide B |
| BNT2429 | O Ring | BNT5558 | Screw | BNT5739 | Clutch Button Assembly |
| BNT2717 | E Lock | BNT5627 | Yoke | BNT5740 | Clutch Bar Guide A |
| BNT4124 | Star Drag Spring | BNT5641 | Handle Nut Plate | BNT5742 | Washer |
| BNT4194 | Ball Bearing | BNT5645 | Cast Control Cap | BNT5743 | Brake Case Assembly |
| BNT4343 | Ball Bearing | BNT5647 | Roller Clutch Inner Tube | BNT5744 | Washer |
| BNT4503 | Clutch Pawl Spring | BNT5648 | Key Washer | BNT5745 | Right Side Plate Cam Lever |
| BNT4729 | O Ring | BNT5649 | Drag Washer | BNT5746 | Washer |
| BNT4814 | Screw | BNT5651 | Drag Washer | BNT5748 | Right Side Plate Assembly |
| BNT4817 | Screw | BNT5652 | Anti-Reverse Ratchet | BNT5752 | Handle Assembly |
| BNT4819 | Idle Gear | BNT5654 | Idle Gear | BNT5753 | Left Side Plate |
| BNT4865 | Bearing Spacer | BNT5657 | Line Guide Assembly | BNT5754 | Drive Gear |
| BNT4874 | Pawl Cap | BNT5659 | Idle Gear | BNT5755 | Pinion Gear |
| BNT4884 | Clutch Cam Retainer | BNT5661 | Level Wind Guard | BNT5756 | Screw |
| BNT4892 | Stabilizer Bar | BNT5668 | Screw | BNT5757 | Screw |
| BNT4893 | Washer | BNT5673 | Screw | BNT5762 | Screw |
| BNT4903 | Star Drag Nut | BNT5674 | Screw | BNT5768 | Handle Knob |
| BNT4932 | Click Spring | BNT5675 | Spool Assembly | BNT5855 | Frame Assembly |
| BNT4945 | Ball Bearing | BNT5676 | Brake Ring Gear Assembly | BNT5858 | Ball Bearing |
| BNT5021 | Roller Clutch Bearing | BNT5681 | Spring | BNT5860 | Star Drag Click Plate |
| BNT5142 | Screw | BNT5689 | Worm Shaft | BNT5971 | O Ring |
| BNT5201 | Yoke Spring | BNT5713 | Handle Knob Seal | BNT5972 | Brake Dial |
| BNT5308 | Washer | BNT5714 | Screw | | |
| BNT5310 | Idle Gear Pin | BNT5722 | Handle Nut | | |
| BNT5314 | Click Plate Retainer | BNT5723 | Washer | BNT4692 | B-100 Oil (Accessory) |